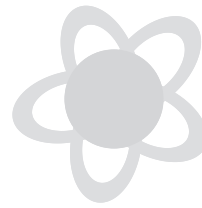




The pattern sheet includes the basic model with both long and short sleeves. Optionally, the design can include ruffles inserted in the side panels or added on the sleeves.

Also, the skirt be doubled for an overskirt and an underskirt, and the sleeves may be doubled to create a layered look. For a sportier dress use with the shorter skirt pieces; for a fancier dress with ruffles use the longer skirt pieces.

Design examples can be viewed at <http://www.farbenmix.de>.



Sizes (EUR - USA)

✿	98/104	-	3/4
✿	110/116	-	5/6
✿	122/128	-	7/8
✿	134/140	-	9/10

1-8th Girly-girl dress HENRIKA

Please be certain to measure the desired sleeve length and hemline and compare the measurements with the table below or the pieces on the pattern sheet. The dress is sized according to body height.

Measurements / Sizes	EUR US	98/104 3/4	110/116 5/6	122/128 7/8	134/140 9/10
Chest		63 cm 25"	66 cm 26"	70 cm 27 1/2"	74 cm 29"
Front length		60 cm 23 1/2"	66,5 cm 26 1/4"	74 cm 29"	81 cm 32"
Sleeve length (long)		28,5 cm 11 1/4"	33 cm 13"	37,5 cm 14 3/4"	42 cm 16 1/2"
Sleeve length (short)		15,5 cm 6 1/8"	16 cm 6 1/4"	17 cm 6 3/4"	18 cm 7"
Fabric Requirements (55" wide) Sporty Dress with long sleeves		115 cm 45 1/2"	135 cm 53"	155 cm 61"	175 cm 69"
Fabric Requirements (55" wide) Dress with doubled skirt and doubled sleeves		155 cm 61"	185 cm 73"	215 cm 85"	245 cm 96 1/2"
Notions		Snaps, buttons or zipper, fusible interfacing, thread			

Cutting the Layout

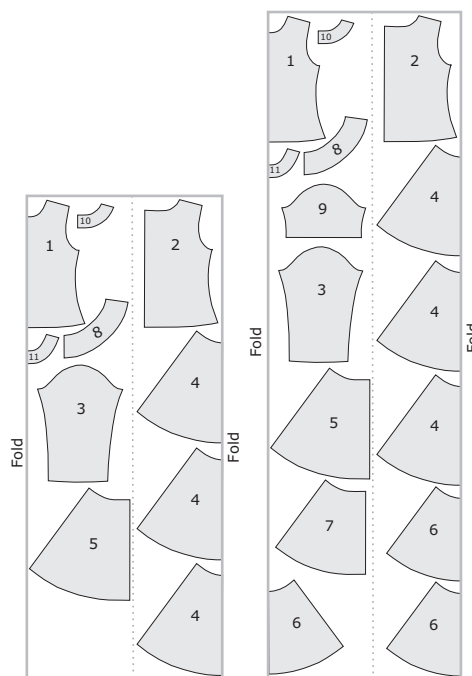
Fold fabrics in half lengthwise so that one selvage lies on the other and the right side is facing in. Pin pattern pieces to left side of the fabrics as shown in the cutting layout and include a 3/8" seam allowance. The pieces are cut with the grain. **Please note that the pattern pieces do not include a seam allowance.**

Pattern pieces/ Cutting layout - Dress with doubled skirt and doubled sleeves

1 - Front	1 x on fold
2 - Back	2 x
3 - Sleeve (long)	2 x
4 - Under skirt (front and side panels)	3 x on fold
5 - Under skirt (back)	2 x
6 - Over skirt (front and side panels)	3 x on fold
7 - Over skirt (back)	2 x
8 - Flounce at cuff	2 x
9 - Sleeve (short)	2 x
10 - Facing back	2 x
11 - Facing front	1 x on fold

Pattern pieces / Cutting layout - Sporty Dress with long sleeves

1 – Front	1 x on fold
2 – Back	2 x
3 – Sleeve (long)	2 x
4 – Under skirt (front and side panels)	3 x on fold
5 – Under skirt (back)	2 x
8 – Flounce at cuff	2 x
10 – Facing back	2 x
11 – Facing front	1 x on fold



Sewing

1. Stitch skirt pieces together. Press seam and topstitch.
2. Stitch shoulder seams. Press seam toward front and topstitch.
3. Stitch flounces to sleeves (optional). Press seam upward and topstitch.
4. Stitch sleeves to bodice.
5. Stitch bodice side seams and sleeves in one continuous seam.
6. Stitch skirt to bodice. Press seam upward. Topstitch waist seam.
7. Turn the seam allowance of the back button band. Fold button band allowance to the right side of the fabric and pin. Pin neck facing to neckline and button band.
8. Stitch neck facing to neckline and button band. Trim seam allowance as desired and fold inward.
9. Turn the button band at the bottom. Press flat and topstitch button band and neckline.
10. Mark and stitch buttonholes. Lap RIGHT front over LEFT, matching centers. Sew buttons under button holes.

Optional Ruffled Dress

1. Trace the pattern pieces for the front and back side gore panels and include a seam allowance when cutting.
2. Cut 6 approx. 24" strips for ruffles (width as desired) and finish lower edges.
3. Gather the top edges.
4. Beginning with the bottom ruffle, pin ruffle to side panels facing upward. Stitch. Press top edge of ruffle down and topstitch. Repeat for each ruffle.

Have fun and enjoy your project!

Design & Instructions: : © [Farbenmix.de](#) Sabine Pollehn

Patterndirektice: Anja Müssig, Translation: Nancy Langdon, Cover Art: Gaby Siewertsen, Patternlayout: K Grohman

Single sewn examples of this design may be sold individually by seamstresses commercially. However, this design may not be reproduced in larger quantities without express written consent. The pattern may not be photocopied or reproduced digitally or otherwise. The design is protected under copyright law, all rights reserved.