

Wave Shirt Hermosa

Hermosa Beach is a sunny Southern California beach town north of Redondo Beach. Hermosa Beach is just 4 square miles, but contains so much typical for Southern California: Hippies, skaters, millionaires, beach volleyballers, drum circles, artists, con artists and B-list celebrities. Hermosa Beach also has one of the best breaks in the Santa Monica Bay and often surfers find the best waves here. Often, the shirt HERMOSA also makes beautiful waves. "Hermosa" means "beautiful" in Spanish: To me, HERMOSA is beautiful when worn north of the skirt REDONDO. HERMOSA can be sewn either as a pullover top or a wrap-around shirt, either with short sleeves or with long original-design trumpet sleeves. A personal favorite of mine is to wear a somewhat shorter short-sleeve HERMOSA over a slightly longer long-sleeve HERMOSA, thereby layering two wavy hems.



Knit fabrics are recommended for the sleeve caps and shirt bodice for the pullover version. The flounces of the shirt and sleeves may be made out of the same knit as the sleeve caps and bodice or from a non-stretching lightweight woven fabric, such as cotton percale, eyelet, batiste, or organza. The wrap-around version of this shirt may be sewn entirely out of non-stretch wovens. Please note, the lighter the material hand, the more the waves will appear. Similarly, the stiffer the shirt is hemmed, for example with bias tape, the better the flounces will form waves.

Design examples and photo diagrams of the sewing the shirt may be viewed at <http://www.farbenmix.de> – Anleitungen.

Fabric Requirements and sizes (approximates)

Before sewing, please take measurements, especially the bodice width, sleeve length and front and compare to the table below.

Size (European; U.S.)	98/104; 3t/4t	110/116; 5/6	122/128; 7/8	134/140; 9	146/152; 10
Bodice	67 cm / 26.5 in	69 cm / 27 in	73 cm / 29 in	77 cm / 30 in	85 cm / 33.5 in
Arm width	7,5 cm / 3 in	8 cm / 3 in	8.5 cm / 3.5 in	9 cm / 3.5 in	10 cm / 4 cm
Sleeve length	30 cm / 12 in	34 cm / 13.5 in	39 cm / 15.5 in	44 cm / 17 in	49 cm / 19 in
Length (front)	41 cm / 16 in	45 cm / 18 in	49 cm / 19 in	53 cm / 21 in	59 cm / 23 in
Material Pullover Shirt (140 cm / 54")	100 cm / 1 1/8 yd.	115 cm / 1-1/4 yd.	130 cm / 1-1/2 yd.	145 cm / 1-3/4 yd.	160 cm / 2 yd.
Material Wrap-Around (140 cm breit)	120 cm / 1-3/8 yd.	140 cm / 1-5/8 yd.	160 cm / 1-3/4 yd.	180 cm / 2 yd.	200 cm / 2-1/4 yd.
Wave Shirt – Rickrack, tape, lace, etc.	250 cm / 2-7/8 yd	270 cm / 3 yd	290 cm / 3-1/8 yd	310 cm / 3-5/8 yd	330 cm / 3 7/8 yd
Wrap-Around Shirt – Bias Tape	600 cm / 236 in	640 cm / 252 in	680 cm / 268 in	720 cm / 238.5 in	760 cm / 300 in

Trace the pattern pieces and include a seam allowance. **Please note: The pattern pieces do not include a seam allowance.** For cutting the flounces, it is recommended to fashion a template from a piece of cardstock.

Wave Flounce Pullover Shirt

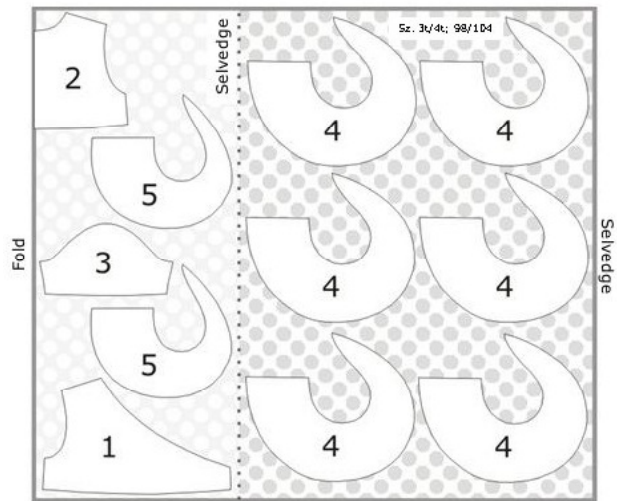
Piece List

1 – Front	cut 2
2 – Back	cut 1 on fold
3 – Sleeve	cut 2
4 – Shirt Flounce	cut 6
5 – Sleeve Flounce	cut 4

Neck Band = (measurements include seam allowance)

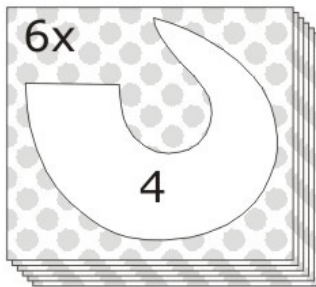
Sz. 3t/4t; 98/104 : 5 x 76.8 cm	2 x 30 in.
Sz. 5t/6; 110/116 : 5 x 77.6 cm	2 x 30.5 in
Sz. 6x/7; 122/128 : 5 x 79.2 cm	2 x 31 in
Sz. 8; 134/140 : 5 x 80.8 cm	2 x 32 in
Sz. 9; 146/152 : 5 x 82.8 cm	2 x 32.5 in

Layout



Cutting layout

1. Fold the fabric according to the layout above. Cut the pieces with the grain according to the layout and **include a seam allowance**.



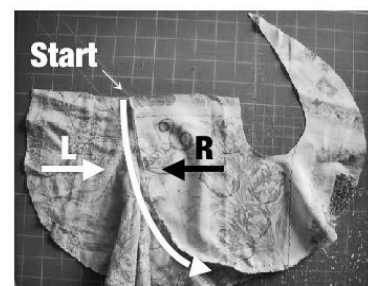
Recommended cutting time-saver: Cut six squares of material slightly larger than the size of the shirt flounce (piece No. 4). Decide in which direction the flounces should “wave”, to the left or to the right, possibly in the same direction as the matching REDONDO skirt. Lay three pieces of material on top of each other and cut around the template with a rotary cutter, or trace with chalk and cut with scissors. Do the same for the remaining three squares. Please be mindful of the fabric grain when cutting. The top of the flounce (flat edge) should lay perpendicular to the grain.

Cut four squares of material a bit larger than the sleeve flounce (pattern piece No 5). Lay two pieces of fabric right side UP and two pieces with the right side DOWN and stack. Lay the sleeve flounce template on top and cut the pieces. Please be mindful of the fabric grain when cutting.

Fold the remainder of the material along the centerline and cut the Front, Back, Shoulder Cap and Neckband pieces according to the piece list.

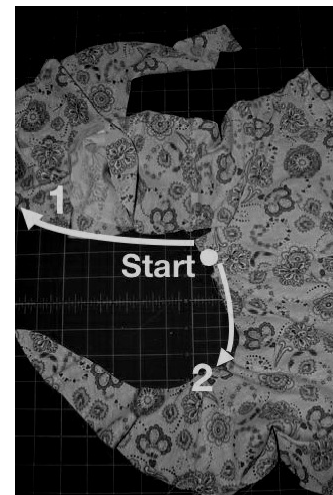
Constructing Hermosa as a Pullover Shirt

1. Stitch the front right and left bodice pieces (piece No. 1) to the bodice back (piece No. 2) at the shoulders. Press and topstitch the seams.
2. Press the neckband in half lengthwise. Stitch the neckband around the collar, stretching the material of the neckband slightly as you stitch, beginning at the right front bodice piece and stitching around the back collar and down the left front bodice piece. Turn, press and topstitch. This design allows for adding non-elastic trims around the neckline, if desired.
3. Lay two shirt flounce pieces (piece No. 4) right sides together. Stitch the shirt flounces left edge of one flounce to the right edge of the next. In other words, stitch the longer outer curved edge to the shorter inner curved edge. **Always begin stitching at the top of each flounce.** Stitch slowly through the curve and slightly adjust material to avoid stitching tiny folds in



the material. Add another flounce to the first two to make a **set of three flounces**. Repeat with the remaining three shirt flounces to create another, separate set of three flounces.

4. Stitch one set of three shirt flounces to the bottom edge of the bodice back.
5. Lay the two front bodice pieces left over right and secure with pins. Staystitch the two front bodice pieces. Stitch the remaining set of three flounces to the bodice front.
6. Stitch the two right sleeve flounces together, left edge to right edge stitching as described above. Repeat for the left sleeve flounces.
7. At this time, lay the sleeve flounces next to the sleeve cap (piece No. 3) and measure the length. If the sleeve needs to be shortened, please do so at this time by trimming the top edge of the sleeve flounces.
8. Stitch sleeve flounces to sleeve caps (pattern piece No. 3). Press and topstitch seam with a three-stitch zigzag stitch.
9. Stitch sleeve caps to the bodice.
10. **Stitch the side seams in TWO steps (important!):** 1. Begin under the arm on the bodice and stitch UP through the sleeve toward the sleeve hem. Stitch slowly through the curve and slightly adjust the material to avoid stitching tiny folds in the material. 2. Turn the garment and begin again at the same place under the arm on the bodice and stitch DOWN toward the shirt hem. Repeat for the other side seam.
11. Topstitch the seam at around the bodice middle using a three-stitch zigzag stitch.
12. Hem the shirt and sleeves. Options for hemming include three-thread rolled edge hem, four-thread overedge flatlock stitch, bias tape, lace or other trim. Bias tape will create a more wavy effect in the hem.

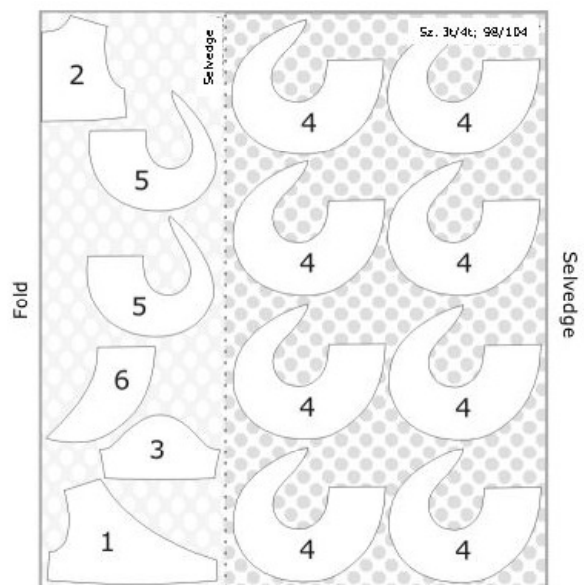


Constructing HERMOSA as a *Wrap-Around Shirt*

Piece List

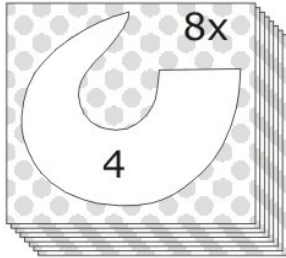
1 – Front	cut 2
2 – Back	cut 1 on the fold
3 – Sleeve	cut 2
4 – Shirt Flounce	cut 8
5 – Sleeve Flounce	cut 4
6 – Shirt Flounce End Piece	cut 1

Cutting Layout



Cutting Layout

2. Fold the fabric according to the layout above. Cut the pieces with the grain according to the layout and **include a seam allowance**.

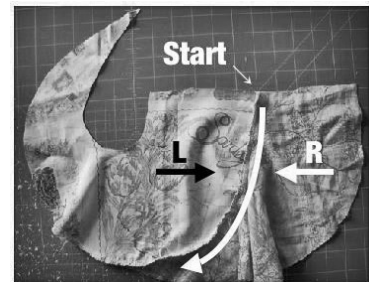


Recommended cutting time-saver: Cut eight squares of material slightly larger than the size of the shirt flounce (piece No. 4). Decide in which direction the flounces should “wave”, to the left or to the right, possibly in the same direction as the matching REDONDO skirt. Lay three pieces of material on top of each other and cut around the template with a rotary cutter, or trace with chalk and cut with scissors. Do the same for the remaining five squares. Please be mindful of the fabric grain when cutting. The top of the flounce (flat edge) should lay perpendicular to the grain.

Cut four squares of material a bit larger than the sleeve flounce (pattern piece No 5). Lay two pieces of fabric right side UP and two pieces with the right side DOWN and stack. Lay the sleeve flounce template on top and cut the pieces. Please be mindful of the fabric grain when cutting.

Fold the remainder of the material along the centerline and cut Back, Front, Sleeve Cap and End Piece pieces according to the layout.

1. Stitch the front right and left bodice pieces (pattern piece No. 1) to the bodice back (pattern piece No. 2) at the shoulders. Turn, press and topstitch seams.
2. Stitch the two right sleeve flounces (piece No. 5) together, left edge to right edge, rights sides together. In other words, stitch the longer, outer curved edge to the shorter, inner curved edge. Always begin stitching at the top of each flounce. Stitch slowly through the curve and slightly adjust material to avoid stitching tiny folds in the material. Repeat for the left sleeve flounces.
3. At this time, lay the sleeve flounces next to the sleeve cap (pattern piece No. 3) and measure the length. If the sleeve needs to be shortened, please do so at this time by trimming the top edge of the sleeve flounces.
4. Stitch sleeve flounces to sleeve caps. Press seam and topstitch.
5. Stitch sleeve caps to the bodice.
6. Close the side seams of the shirt bodice and sleeve. Begin at the bottom edge of the bodice and stitch UP the sleeve through the flounce curve.
7. Stitch the eight shirt flounces together (pattern piece No. 4), left edge to right edge as described above. Stitch the end piece (piece No. 6) to the last flounce. Press and topstitch seams between flounces as desired.
8. Lay the shirt bodice open and pin the 8 flounces plus end piece to the edge of the bodice right sides together. Stitch and finish seam. Press and topstitch.
9. Trim or round the lower ends of the left and right bodice wrap pieces.
10. Attach ribbons or drawstrings to the right and left sides of the bodice between the flounces and the bodice. If you choose to hem the shirt with bias tape, you may stitch the doubled folded bias tape down the middle and use this as the shirt ties.
11. Strengthen and stabilize the material with a small piece of fusible interfacing at the left side seam near where the flounces meet the bodice. Stitch and cut a buttonhole wide enough for the ribbon or drawstring.



12. Finish the hem edges of the shirt. Options include a folded hem, bias tape, lace or other trim. Bias tape will enhance the wave effect of the hem.
13. Finish the cuff edges of the sleeves in the same manner.

We wish you much joy and success with your sewing project!



Design & Cover Art: Nancy Langdon • Mother of Invention Inc. • Redondo Beach, CA Pattern Sheet: Anja Müssig Directions: Nancy Langdon & Katalina Grohman Sales & Distribution Europe: Farbenmix.de

© 2006 Nancy Langdon • Mother of Invention Inc. • All Rights Reserved.

Registered Model: This pattern is for the exclusive use of private customers. Use of this design for resale may only be done by individual, independent seamstresses on a single machine for sale to individual buyers. Resale of the garment without the name of the couturier is not permitted.