

Pinafore dress OLIVIA



The pinafore dress OLIVIA is really two dresses: An easy-to-sew under dress and a wonderfully versatile pinafore. The under dress is slightly flared and has a long hood, which can be knotted twice, and is adorned with a fun sweatshirt-type pocket. The under dress may cut short for summer or longer for cooler seasons. Recommended fabrics are light to medium weight knits. The under dress is suitable for beginners, however the tracing of pattern pieces may require some concentration.

The pinafore can be made opening either in the front or the back. The pinafore works well without the under dress over jeans, slacks or leggings. The design includes an optional hem casing through which a ribbon or cord can cinch the hem creating a slight balloon effect.

Design examples may be viewed at:
<http://www.farbenmix.de/anleitungen/schnitte/olivia/oliviaDesign.htm>

Important: Please be certain to take measurements, especially dress length and bodice width. The dresses are sized according to body height.

Materials

Sizes	EUR US	86/92 1/2	98/104 3/4	110/116 5/6	122/128 7/8	134/140 9/10
Under dress						
Chest		60 cm 23 5/8"	62 cm 24 1/2"	66 cm 26"	70 cm 27 1/2"	74 cm 29 1/8"
Front length		50 cm 19 3/4"	57 cm 22 1/2"	64 cm 25 1/4"	71 cm 28"	78,5 cm 31"
Sleeve length (long)		31 cm 12 1/4"	36 cm 14 1/4"	40,5 cm 16"	45 cm 17 3/4"	49,5 cm 19 1/2"
Sleeve length (short)		14,5 cm 5 3/4"	15 cm 5 7/8"	16 cm 6 1/4"	17 cm 6 3/4"	17,5 cm 6 7/8"
Fabric (140 cm, 55 1/8" wide)		105 cm 42"	110 cm 44"	115 cm 46"	120 cm 48"	125 cm 50"
Pinafore						
Front length		47,5 cm 18 3/4"	54,5 cm 21 1/2"	61,5 cm 24 1/4"	69 cm 27 1/4"	76 cm 30"
Chest		62 cm 24 1/2"	64 cm 25 1/4"	68 cm 26 3/4"	72 cm 28 3/8"	76 cm 30"
Fabric (140 cm, 55 1/8" wide)		90 cm 36"	95 cm 38"	100 cm 40"	105 cm 42"	110 cm 44"
Notions		buttons, thread, 320 cm (126") round elastic cord or ribbon				

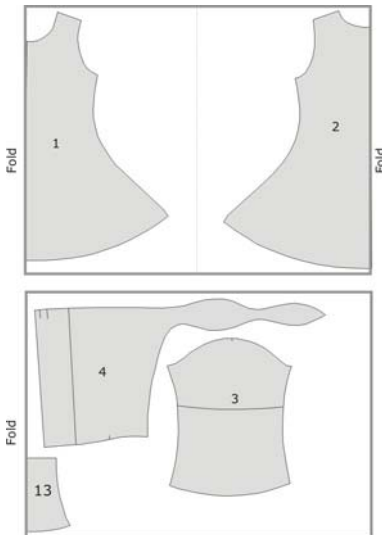
Pinafore dress OLIVIA

Cutting the Layout

Fold fabrics in half lengthwise so that one selvage lies on the other and the right side is facing in. Pin pattern pieces to left side of the fabrics as shown in the cutting layout and include a 3/8" seam allowance. The pieces are cut with the grain. **Please note that the pattern pieces do not include a seam allowance.**

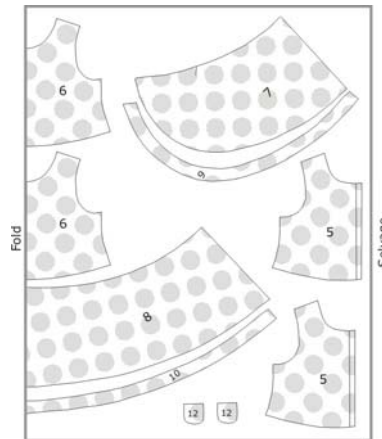
Pattern pieces /Cutting layout Under dress

1 – Front	1 x on fold
2 – Back	1 x on fold
3 – Sleeve	2 x
4 – Hood	2 x
13 – Pocket	2 x



Pattern pieces /Cutting layout Pinafore

5 - Bodice Front	4 x
6 - Bodice Back	2 x on fold
7 - Skirt Front	2 x
8 - Skirt Back	1 x on fold
9 - Facing for Front Skirt Hem	2 x
10 – Facing for Back Skirt Hem	1 x on fold
11 – Round elastic cord, ribbon or fabric cord	approx. 126"
12 – Ends of cord, toggles, etc.	4 x



Sewing

UNDER DRESS

1. Please cut the dress pieces according to the above lists including an additional seam allowance (3/8" for a normal seam; less for overedge flatlock). For the under dress front and back (pieces 1&2), lay the material flat and fold the outer selvages inward toward the middle such that there are two folds. Cut the front and back pieces on the folds according to the layout. Once the front and back have been cut, fold the fabric back along the original center fold and cut the additional pieces according to the above list (pieces 3, 4 and 13).
2. Stitch front and back dress pieces at the shoulders right sides together. Staystitch.
3. Stitch hood pieces (4) right sides together along the hood top and back. Double fold the front edge of the hood and stitch (three-stitch zigzag).
4. Pin the hood right sides together to the neck opening of the dress, beginning at the middle of the back and pinning forward. Overlap the ends in the front of the dress slightly and baste stitch to hold. Stitch hood to dress. Turn right sides and topstitch (three-stitch zigzag).
5. Attach sleeves (3).
6. Close side seams of dress and sleeves in one continuous seam. Staystitch seam.

Pinafore dress OLIVIA

7. Turn cuffs under and stitch.
8. Pin pocket pieces right sides together and stitch. Leave a small opening in the upper edge to turn the pocket right side out.
9. Trim, grade and notch seam allowances. Turn, press and topstitch. Position the pocket in the center on the front of the dress, pin and stitch. Do not stitch the side openings. Secure the pocket openings with small zigzag stitches.

PINAFORE

1. Please cut the pinafore pieces according to the above list. Remember to include including an additional seam allowance (3/8" for a normal seam; less for overedge flatlock). The pattern pieces do not include a seam allowance. Use ribbon, round elastic cord or a fabric cords (approx. 3 1/2 yards) for the hem cinch (optional).
2. Stitch the side seams of the skirt (7&8). Press seams open. Stitch the pieces of the hem facing/cinch casing together (9&10). Press seams open.
3. Mark buttonhole of the hem casing as marked on the pattern. Reinforce material at buttonhole mark with fusible interfacing. Stitch buttonhole. Repeat for other side
4. Pin hem facing/cinch casing right sides together to the skirt and stitch. Press seam upward. Topstitch first at hemline, then approx. 3/4" from the edge.
5. Apply fusible interfacing to the button band of the bodice (5).
6. Stitch shoulder seams of outer bodice pieces (5,6) right sides together. Turn, press and topstitch, seams facing forward. Do the same for the bodice lining pieces.
7. Pin bodice outer pieces and lining right sides together. Stitch neck, armholes and front edges. Trim and grade seams. Notch corners.
8. Turn through the shoulder and press. Pin sides right sides together. Stitch side seams of outer bodice and lining in one continuous seam.
9. Trim seam slightly near the armpit. Topstitch armhole seams.
10. Gather the top edge of the pinafore skirt. Pin skirt to outer bodice right sides together. Leave approx. 1/2" on either side of the front opening. Stitch skirt to bodice.
11. Insert skirt into bodice between outer bodice and lining. Pin and stitch the bodice lining to the outer bodice/skirt. Leave approx. 5" open. Notch corners and grade seams where necessary. Turn and hand stitch the opening. Topstitch the waist seam.
12. Mark and stitch buttonholes. Lap RIGHT front over LEFT, matching centers. Sew buttons under button holes.
13. Insert ribbon or cord through the casing.
14. Pin end pieces (12) right sides together. Stitch edges. Leave approx. 1/2" open. Trim and grade seams, notch corners. Turn and press. Insert ends of ribbon or cord into the opening and pin. Topstitch around edges and secure ribbon or cord into the end piece.

Have fun and enjoy your project!

Design:	Sabine Pollehn
Patterndirektrice:	Anja Müssig
Instructions:	Katalina Grohman
Translation:	Nancy Langdon
Cover Art:	Gaby Siewertsen