

Striped flare pants PAULA



The striped flare pants PAULA are easy to sew and suitable for beginners.

The striped pants PAULA are very versatile. You may choose from solids or patterned fabrics. You may embellish with pockets, trims, appliques, ruffles and/or contrasting top stitching. This pattern is perfect for using all those leftover fabric scraps everybody has lying around.

You may view design examples here:

<http://www.farbenmix.de/anleitungen/schnitte/Paula/paulaDesign.htm>

Important: Please take measurements before you start, especially the side seam, waist and hip measurements.

Materials

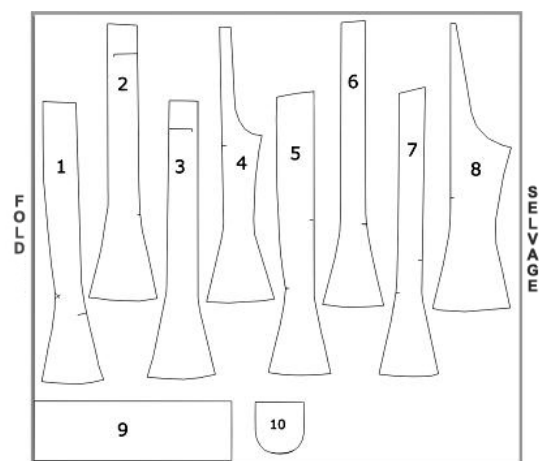
Sizes	EUR US	86/92 1/2	98/104 3/4	110/116 5/6	122/128 7/8	134/140 9/10
Waist (actual)		42 cm 16 1/2"	44 cm 17 5/16"	46 cm 18 1/8"	49 cm 19 1/4"	52 cm 20 1/2"
Waist (pattern)		55.5 cm 21 7/8"	58 cm 22 7/8"	60 cm 23 5/8"	63 cm 24 3/4"	66 cm 26"
Hip		60.5 cm 23 7/8"	63 cm 24 3/4"	67 cm 26 3/8"	73 cm 28 6/8"	79 cm 31 1/8"
Side (incl. Waistband)		43.5 cm 17 1/8"	52.5 cm 20 5/8"	61.5 cm 24 1/4"	70.5 cm 27 3/4"	79.5 cm 31 1/4"
Fabric (140 cm, 55 1/8" wide)		65 cm 26"	70 cm 27.5"	75 cm 29.5"	80 cm 31.5"	85 cm 34"
Elastic (0.7 cm, 3/8" wide)		90 cm 36"	94 cm 37"	98 cm 39"	104 cm 41"	110 cm 44"

Cutting the Layout

Because the pattern pieces are very similar, the tracing and cutting requires some concentration. The pieces are cut with the grain. Seam allowances need to be added. **Please note that the pattern sheet does not include seam allowances.** The waistband (9) already includes the seam allowance.

Pattern pieces

1 – Pant leg front outside	2 x
2 – Pant leg front middle side	2 x
3 – Pant leg front inside middle	2 x
4 – Pant leg front inside leg (inseam)	2 x
5 – Pant leg back outside	2 x
6 – Pant leg back middle side	2 x
7 – Pant leg back inside middle	2 x
8 – Pant leg back inside leg (inseam)	2 x
9 – Waistband (includes seam allowance)	1 x on fold
10- Pocket	2 x
11- Bias tape	1 x
86/92: 4 cm x 76.5 cm,	1/2: 1 5/8" x 30 1/8"
98/104: 4 cm x 77.5 cm,	2/3: 1 5/8" x 30 1/2"
110/116: 4 cm x 79.5 cm,	5/6: 1 5/8" x 31 5/16"
122/128: 4 cm x 82.0 cm,	7/8: 1 5/8" x 32 2/8"
134/140: 4 cm x 84.0 cm,	9/10: 1 5/8" x 33 1/16"



Striped flare pants PAULA

Sewing

1. Start with the front of a pant leg. The easiest way is to lay the pieces next to each other in order 1-4. Now you stitch piece #1 right sides together to piece #2, #2 to #3, and #3 to #4. Finish all seams with 4-thread overedge or zig zag stitch. Press seams and topstitch every row from top to bottom.
2. Now repeat Step 1 with the second front pant leg and the 2 back pant legs.
3. Stitch the side seam right sides together. You'll have 2 big pieces now. Do not stitch the inseams of the legs together yet!!
You may hem the pants any way you like, maybe add lace, ruffles or a large rick rack trim to the bottom. You will find detailed pictured descriptions on our website:

<http://www.farbenmix.de/anleitungen/schnitte/Paula/fotopaula/paulafoto.htm>
4. Pockets are next. Stitch pocket pieces (10) right sides together leaving an opening for turning. Trim seam allowance back and turn pockets right side out. Topstitch around the pocket once. Now pin and stitch pockets to front or back of pant legs. Use a small zig zag stitch on the top corners of pockets to secure.
5. Now you'll stitch the inseams of each leg (right sides together). You now have 2 finished pant legs!
6. Turn one pant leg right side out and insert it inside the other pant leg. Now you'll close the crotch seam. Start at one end and sew in one continuous motion the crotch seam. Turn pants right side out and topstitch the seam.
7. Next is the waistband (9). Stitch short ends right sides together leaving a little opening in the bottom 3rd for inserting the elastic. Now attach the waistband. The easiest way is if you attach the right side of the waistband to the inside of the pants. Now you'll fold the waistband over. Fold the seam allowance under and pin it to the outside of pants. First you'll topstitch the bottom and then the top. Lastly, you'll topstitch right along the middle so you'll get 2 casings. Don't forget to leave an opening for inserting the elastic.
8. Insert the elastic and close the little openings.

We wish you fun and success with you sewing project!!

Design:	Sabine Pollehn
Patterndirektrice:	Anja Müssig
Instructions:	Katalina Grohman
Translation:	Anjana Williams
Cover Art:	Gaby Siewertsen