

Hooded Shirt TAJA



The Taja Hooded Shirt is a basic piece for year-round wear. Depending on the fabric choice, the Taja shirt can be girly or sporty. The shirt can be made with or without the hood and partitions, in one or more colors, with a pocket, with ribbons, appliqués, and with ruffles embellished. The variation of this shirt excluding the hood and the partitions is easy to sew and is practical for the beginning sewer.

A detailed illustrated instruction and photo gallery is provided for you on our Homepage at www.farbenmix.de/anleitungen.

Please make sure to take the measurements before you begin, including the front length and width!

Suoolies

Supplies / Sizes	86/92 1 / 2	98/104 3 / 4	110/116 5 / 6	122/128 7 / 8	134/140 9 / 10	146/152 11 / 12	158/164 13 / 14
Chest	70 cm 27.6"	72 cm 28.3"	74 cm 29.1"	79 cm 31.1"	83 cm 32.7"	91 cm 35.8"	99 cm 39"
Shoulder Width	7,9 cm 3.1"	8,3 cm 3.3"	8,7 cm 3.4"	9,3 cm 3.7"	10,1 cm 4"	10,9 cm 4.3"	11,7 cm 4.6"
Fron Length	40,5 cm 15.9"	44,5 cm 17.5"	48,5 cm 19.1"	42,5 cm 20.1"	56,5 cm 22.2"	62,5 cm 24.6"	69 cm 27.2"
Arm Length	29 cm 11.4"	33 cm 13"	37 cm 14.6"	47 cm 18.5"	47 cm 15.5"	52 cm 20.5"	57 cm 22.4"
Fabric (140 cm 55.1" Wide)	80 cm 31.5"	90 cm 35.4"	100 cm 39.4"	110 cm 43.3"	120 cm 47.2"	130 cm 51.2"	140 cm 55.1"
Notions	Thread, Fuible Web, Ribbon, 1 Button						

Cutting

Cut the pieces as directed in the pattern piece lists and pattern layout with seam allowance and along the grain.

Pattern Pieces with hood

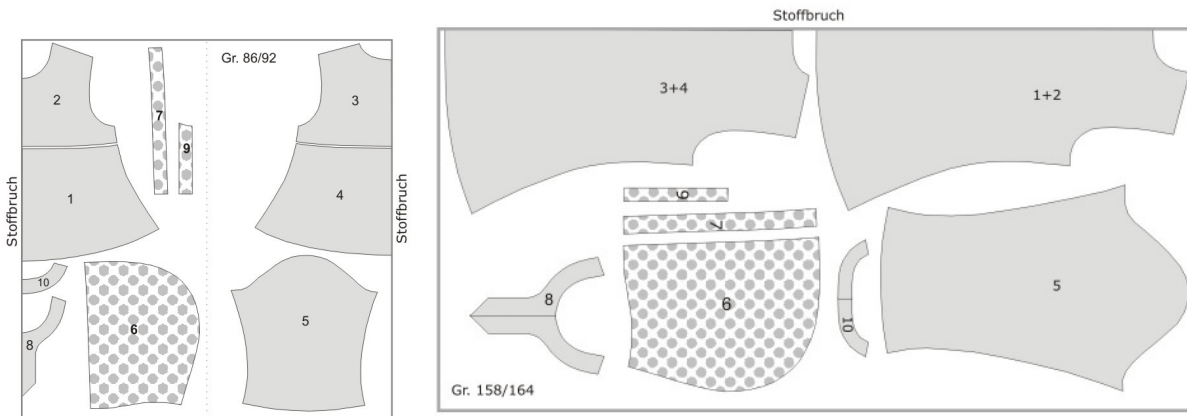
- 1 – Front Piece, bottom 1 x on Fold
- 2 – Front Piece, top 2 x
- 3 – Back Piece, top 1 x on Fold
- 4 – Back Piece, bottom 1 x on Fold
- 5 – Sleeve 2 x
- 6 – Hood 2 x
- 7 – Hood Trimming 2x
- 9 – Front Piece Trimming 2x

Pattern Pieces without hood

- 1 + 2 – Front Piece (without partition) 1 x on Fold
- 3 + 4 – Back Piece (without partition) 1 x on Fold
- 5 – Sleeve 2 x
- 8 – Front Trimming 1 x on Fold
- 10 – Back Piece Trimming 1 x on Fold

Hooded Shirt TAJA

**** Stoffbruch – FOLD ****



Sewing

Shirt with hood

1. Iron the fusible web onto the hood trimmings (7) and front piece trimmings (9) for stability. Lay the hood trimmings and front piece trimmings right sides together and stitch together at the seam. Serge all edges.
2. Lay the front piece, top (2) and the back piece, top (3) right sides together, stitch the shoulder seams together, serge the seam, and edge stitch again from the right side of the fabric.
3. Lay the hood pieces (6) right sides together, stitch and serge the seam then edge stitch. Position the hood on the back of the neckline at the middle and pin in place. Stitch the hood to the neckline starting from this point towards the front of the shirt.
4. To make the button "hole", use a piece of satin ribbon or a piece of cord and cut to the desired length. Fold this into a loop and pin or stitch to the right side of the top a little below the neckline. Make sure that the ends of the loops are pointing toward the sleeve on the inside of the shirt and that the loop is big enough and visible.
5. Lay the prepared trimmings right sides together onto the front piece, top and along the brim of the hood and pin into place. Stitch together, fold inward and iron over the fold. Edge stitch and then parallel stitch again about an inch from the edge stitch.
6. Lay the front piece, bottom and back piece bottom (1 & 4) right sides together, stitch together and serge the seam. Fold the seam allowance down and edge stitch from the right side of fabric.
7. Fold the sleeve in with right sides together and position onto the armhole of the shirt with seams lined up, stitch the sleeve to the shirt. Stitch the underside of the sleeve and the side seam together in one long, continuous stitch.
8. Hem the sleeve and the shirt and sew a button on.

Shirt without Hood

1. Iron the fusible web onto the hood trimmings (8) and front piece trimmings (10) for stability. Mark the slit onto the front piece trimming on the side with the fusible web. Lay the trimmings right sides together, stitch and serge the seams.
2. Lay the front and back pieces together and stitch the shoulder seams shut, then serge the ends.
3. Lay the trimming onto the neckline of the shirt, right sides together with shoulder seams lined up, and stitch together. Make a stitch on trimming about 1/16" from the slit on both sides. To create more stability, stitch again on top of the first stitch. Make sure you stitch all the way to the end, leave the needle embedded, lift the foot, turn the fabric, and continue sewing. Trim the seam allowance back a bit. Cut the slit down to a little under 1/16" away from the end at the stitch. Then cut to the corners very carefully using a sharp and pointy scissor. Fold the neckline trimming in, iron and edge stitch then stitch again 1" away from the edge stitch.

Hooded Shirt TAJA

4. If you are going to incorporate slits on the arms and the sides, make sure to serge the seam allowances separately.
5. Fold the sleeve in with right sides together and position onto the armhole of the shirt with seams lined up, stitch the sleeve to the shirt, serge the seam and edge stitch from the outside.
6. Stitch the underside of the sleeve and the side seam together in one continuous stitch, making sure to start and end at the slit markings on the sleeve and the shirt. Iron down the middle of the seam allowance and unfold again. Fold the bottom seam allowance toward the right side of the fabric and stitch on the ironed line. Clip the corner and fold back in towards the wrong side of the fabric. Do the same to all the corners at the slits.
7. Stitch the hem and slits from the right side of the fabric. Make sure to stitch the slit openings twice.
8. Add the closures of your choice.

Have Fun and Good Luck with your sewing!

Impressum

Design:	Sabine Pollehn
Pattern:	Anja Müssig
Instruction:	Katalina Grohmann
Translation:	Eliza Yilmaz
Cover Art:	Gaby Siewertsen