

Tunic Combo WEEKE



The Tunic Combo WEEKE has so many wonderful variations – depending on the fabric you use it can look funky, girly or cool and sporty!

WEEKE can be made with one or two frills, with ruffles, with one or multiple colours, it can be embellished, as a dress or as a double layered tunic.

Examples and illustrated instructions can be found at www.farbenmix.de - Anleitungen.

Be sure to take measurements, including the side seam and waist before sewing.

Material

Material / Size	86/92	98/104	110/116	122/128	134/140	146/152	158/164
PANTS							
Waist	44 cm	46 cm	48 cm	51 cm	54 cm	58 cm	62 cm
Hips	70 cm	73 cm	76 cm	81,5 cm	87 cm	95 cm	103 cm
Side Seam (inc; . 3 cm band)	36 cm	44,5 cm	53,5 cm	63 cm	72,5 cm	80,5 cm	88,5 cm
TUNIC							
Chest	68 cm	70 cm	72 cm	76 cm	80 cm	88 cm	96 cm
Shoulder	5,2 cm	5,6 cm	6,0 cm	6,4 cm	7,0 cm	7,8 cm	8,6 cm
Length (front)	45 cm	50 cm	55 cm	61 cm	67 cm	75 cm	83 cm
Fabric Tunic (140 cm wide)	75 cm	85 cm	95 cm	105 cm	115 cm	125 cm	135 cm
Fabric Pants (140 cm wide)	55 cm	70 cm	85 cm	100 cm	115 cm	125 cm	135 cm
Notions	Thread, 5 Buttons, Elastic (0,7 cm) – twice the waist measurement plus 8cm.						

Cutting

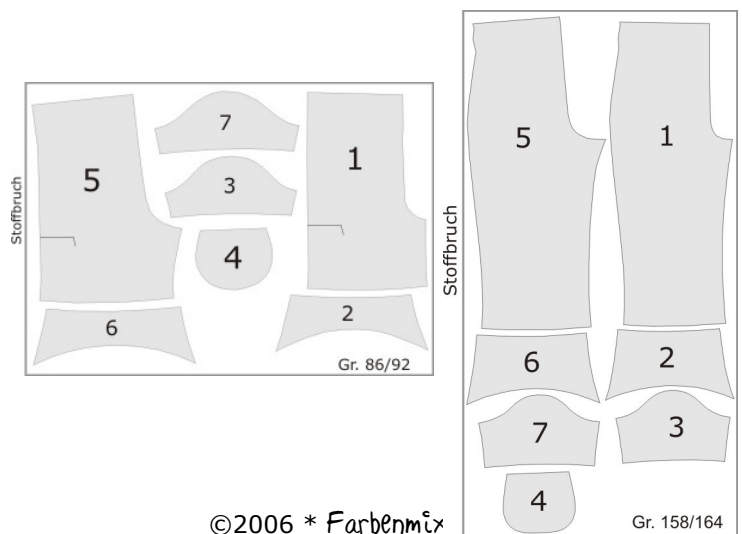
Lay the pieces out according to the layout observing grain lines. Please note the pattern does NOT include seam allowance. Be sure to transfer all markings.

Tip: To save getting mixed up mark the front piece with a vanishing marker or a pin.

Cutting List / Layout Plan PANTS

- 1 – front upper pant piece x2
- 2 – Front lower outer pant piece x2
- 3 – Front lower inner pant piece x2
- 4 – Pocket x2
- 5 – Back upper pant piece x2
- 6 – Back lower outer pant piece x2
- 7 – Back lower inner pant piece x2

*Stoffbruch=Fold



Tunic Combo WEEKE

Cutting List / Layout Plan TUNIC

8 – Front bodice piece	x2 on fold
9 – Back bodice piece	x4
10 – Lower outer piece	x2 on fold
11 – Lower inner piece	x2 on fold



Sewing

PANTS

1. Lay the upper front pant piece (1) and the upper back pants pieces (5) right sides together, sew the side seams and serge.
2. Repeat with the lower pant pieces. Front lower outer (2) and back lower outer (6), front lower inner (3) and back lower inner (7). Hem the lower pieces.
3. *Pocket – easy version.*
Lay the pocket pieces (4) right sides together and sew leaving a small gap on the top edge to allow you to turn the pocket inside out. Trim and clip the corners. Turn the pocket inside out and double top stitch the top edge (approx 1cm). Lay the pocket according to the markings on the back of the pants and attach using a double row of stitching.
4. *Pocket – With bias binding:*
From your chosen fabric cut two strips, each 3.5x50cm (one on the bias and one with the grain). With the right side of the bias strip against the inside of the pocket, sew the bias strip around the pocket curves. Encase the pocket edge with the bias, press and sew. Repeat for the top edge of the pocket with the grain strip making sure that the same amount of strip overhangs either side of the pocket. Place the pocket on the back leg according to the marking and sew.
5. Insert the lower inner pant pieces into the lower outer pant pieces and sew along the upper seam allowance making sure that the front pieces are lying on top of each other.
6. Sew the inseams of the upper pant pieces and serge.
7. Pin the lower leg pieces to the upper leg pieces observing the markings and attach.
8. Turn one pant leg right side out and insert it in the other pant leg so that right sides are together. Start at one end and sew in one continuous motion the crotch seam and serge.
9. To finish the waist band turn the upper edge as indicated by the markings over and under and pin. First top stitch along the upper edge, then the middle and the lower leaving 1cm open along the back seam for the elastic.
10. Insert the elastic and close the openings inserting a small tape to mark the back of the pants.

Tunic Combo WEEKE

TUNIC

1. Use iron on interfacing to strengthen the button hole casings of the two back bodice pieces.
2. Lay the back bodice pieces (9) and the front bodice pieces (8) right sides together and sew and serge the shoulder seams.
3. Lay the inner bodice piece and the outer bodice piece right sides together and sew around the arm holes neck and inside edges (where the buttons will go). Trim and clip the seam allowance and turn inside out through the shoulders.
4. Pin the side seams of both the inner and outer bodice pieces right sides together and finish in one seam. Trim the seam allowance.
5. Top stitch around the arm holes, the neck and the back inside edges (button hole casing)
6. Lay the outer pieces (10) right sides together, stitch the side seams and serge. Repeat with the inner pieces (11)
7. Insert the inner pieces into the outer pieces and sew together along the upper seam allowance.
8. With right sides together lay the lower pieces on to the bodice, pin, sew and serge making sure that the button hole casings are lying one on top of the other. Press the seam allowance towards the bodice and top stitch.
9. Finish buttons and button holes.

Have fun and good luck!

Design:	Sabine Pollehn
Pattern:	Anja Müssig
Instructions:	Katalina Grohmann
Translation	Cree Oliver
Cover Art:	Gaby Siewertsen