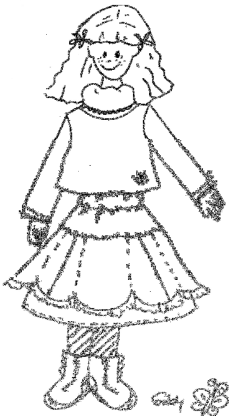


Skirt INSA



This pattern is for a long skirt, but if you wish to make a shorter skirt, then you may use the next size down or shorten the fitted waist panel as needed.

Whether you gather the overskirt more or less, to your liking, you can't go wrong either way.

The finished underskirt can also be worn as a completed skirt on its own and is an easy project for beginning sewers!

Examples of CARA may be viewed at: <http://www.farbenmix.de/anleitungen/>

Material

It is important that you recheck the waist and length to verify that you have the desired measurements!

| Fabric / Sizes | 86/92 1 / 2 | 98/104 3 / 4 | 110/116 5 / 6 | 122/128 7 / 8 | 134/140 9 / 10 |
|---|----------------------------------|------------------------------|-------------------------------|-------------------------------|-------------------------------|
| Waist (pattern) | 60 cm 23.6" | 62 cm 24.4" | 66 cm 26" | 70 cm 27.6" | 76 cm 29.9" |
| Waist (actual) | 43 cm 17" | 44 cm 17.3" | 46 cm 18.1" | 49 cm 19.3" | 52 cm 20.5" |
| Length | 60 cm 23.6" | 62 cm 24.4" | 66 cm 26" | 70 cm 27.6" | 76 cm 29.9" |
| Material – Fabric (140 cm – 55" wide) | 75 cm 29.5" | 90 cm 35.4" | 110 cm 43.3" | 130 cm 51.2" | 185 cm 72.8" |
| Notions | 3 m elastic band about 3/8" wide | | | | |

Cutting

Cut pattern pieces out as stated in the Pattern Pieces list below. Add a 3/8" seam allowance. **Please note that the pattern pieces do not include a seam allowance.**

Ruffles on Overskirt: 2/3 x the length of the width of the skirt, choose ruffle width as you wish.

INSA

- 1 - Overskirt 4x
- 2 - Underskirt 4x
- 3 - Fitted waist Panel 1x

| Seam width / Ruffles | 86/92 1 / 2 | 98/104 3 / 4 | 110/116 5 / 6 | 122/128 7 / 8 | 134/140 9 / 10 |
|----------------------|-----------------|------------------|------------------|------------------|-------------------|
| Overskirt with seam | 233 cm 91.7" | 250 cm 98.4" | 268 cm 105.5" | 286 cm 112.6" | 305 cm 120.1" |
| Underskirt with seam | 243 cm 95.7" | 260 cm 102.4" | 278 cm 109.4" | 296 cm 116.5" | 315 cm 124" |

Skirt INSA

Sewing

1. Make your markings for gathering on the Overskirt on the wrong side of fabric. To do so, make a marking at the top of the overskirt fabric piece and a marking at the bottom of the overskirt fabric piece and connect the two with a straight line. Stretch elastic band when stitching on with a zigzag stitch.
2. Sew the 4 pieces of the overskirt together. Then sew the 4 pieces of the underskirt together.
3. Add the ruffle to the overskirt. If you do not wish to add a ruffle, hem using a clean finish or bias tape. To sew the ruffle, start by sewing the small ends of the ruffle fabric, right sides together, to form a ring. Fold fabric in half lengthwise and use a baste stitch for gathering. Distribute evenly while attaching to the overskirt, gather and stitch. Fold seam allowance inward and finish with an edge stitch.
4. Stitch both skirts (minus fitted waist panel) together at the upper edges at the seam allowance.
5. Sew sides of fitted waist panel together, by folding in half with right sides together, to form a ring. Fold seam allowance towards inside of fitted waist panel and finish off with an edge stitch.
6. Fold top edge of fitted waist panel 4cm (1 1/2") inward, towards wrong side of fabric and pin together. Try the skirt on and alter the fitted waist panel (shorten) as needed.
7. Use an edge stitch for the top of the fitted waist panel. Sew 2 casings about 1cm (1/2") wide, leaving ends open for the elastic bands. Pull an elastic band through each casing, sew together and sew openings closed.

| | |
|--------------|-----------------|
| Design: | Sabine Pollehn |
| Pattern: | Anja Müssig |
| Translation: | Eliza Yilmaz |
| Cover Art: | Gaby Siewertsen |