

Wrap Dress ANNA



The wrap dress is a fantastic transseasonal style.

In summer make it from a light cotton, in winter from jeans, cord or velvet.

So many variations and perfect for appliques and other decorations.

The shorter version looks super cool worn over jeans and is perfect for all body shapes.

It is quick and easy to sew and is suitable for beginners as there are no buttons, zips etc. Straps and ties can be replaced by premade varieties.

Examples of CARA may be viewed at: <http://www.farbenmix.de/anleitungen/>

Material

It is important that you recheck the waist and length to verify that you have the desired measurements! If desired premade straps and ties can be used.

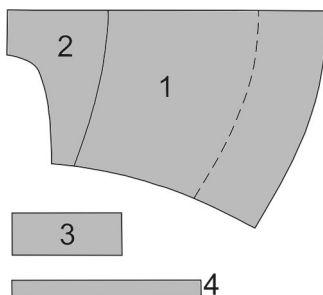
Fabric / Sizes	86/92 1 / 2	98/104 3 / 4	110/116 5 / 6	122/128 7 / 8	134/140 9 / 10
Chest	61 cm 24 in.	63 cm 25 in.	65 cm 26 in.	69 cm 27-1/2 in.	73 cm 29 in.
Length	54 cm 21-1/2 in.	61 cm 24-1/8 in.	68 cm 27 in.	77 cm 30-1/4 in.	87 cm 34-1/4 in.
Material – Fabric (140 cm – 55" wide)	110 cm 1-1/4 yrd	120 cm 1-3/8 yrd	150 cm 1-3/4 yrd	165 cm 1-7/8 yrd	180 cm 2 yrd
Notions	Fusible web or seam binding tape				

Cutting

- | | |
|--|------------|
| 1 – Front-/Back piece | x2 on fold |
| 2 – bodice lining Front and Back piece | x2 on fold |
| 3 – Straps including seam allowance | x2 |
| 4 – Ties including seam allowance | x4 |

Please note that pattern pieces do NOT include a seam allowance.

This must be added on with the exception of the straps and the ties – these do include a seam allowance.



Wrap Dress ANNA

Sewing:

1. Fold strap pieces in half lengthways and press. Open out again and then fold both edges towards the middle and press again. Fold strap in half lengthwise. Top stitch either side of strap. Repeat for the ties.
2. Hem the bottom seam of the bodice lining pieces.
3. Take the straps and pin them to the right side of the front and back bodice lining pieces approximately 0.5 cm from the armhole seam line and sew on the seam allowance.
4. Pin the bodice lining and dress pieces right sides together sew along the top edge. Trim and clip the seam allowance.
5. Hem the side edges of the two apron dress pieces beginning at the bodice.
6. Pin front bodice to back bodice right sides together. When doing so insert a tie between the bodice and the front and pieces. Continue pinning the front bodice lining to back bodice lining.
7. Stitch the side seams of the bodice. Where the bias strip is attached reverse sew to strengthen. Turn right side out and topstitch.
8. Hem bottom edge.

Design:	Sabine Pollehn
Pattern:	Anja Müssig
Translation:	Cree Oliver
Cover Art:	Christine Rogaischus