

# Skirt Set Emely

The skirt set EMELY is designed to be somewhat longer and has a flexible fit. There are two versions from which to choose: One for the more petite child and one for the child with a more solid build.

There is also a shorter version of the skirt. The longer skirt can also be made as an underskirt without pockets. In this case it is a good idea to choose a good basic fabric for mixing and matching, so that different skirts can be worn with the underskirt.

The top also looks very cute worn as a vest with the fastening at the front. It can also be constructed out of two different fabrics and works well with pants

The set is fabulous for all seasons with so many variations possible. It is well suited for beginners.

Illustrated instructions and design examples may be viewed at our website: [www.farbenmix.de](http://www.farbenmix.de) - Anleitungen.

Please be sure to measure the length and width before deciding on a size. It is particularly important to check the chest measurement for a good fit.

## Material

Fabric/Size		86/98 18-24 mons.	98/104 3T/4T	110/116 5/6	122/128 7/8	134/140 9	146/152 10
<b>For the solidly built child</b>	<b>Top</b>						
	Chest cm	66 cm	68 cm	70 cm	74 cm	78 cm	86 cm
		26 in	26 3/4 in	27 1/2 in	29 1/4 in	30 3/4 in	33 3/4 in
	Length (front)	27.5 cm	31 cm	34.5 cm	38.5 cm	42.5 cm	48 cm
		10 3/4 in	12 1/4 in	13 1/2 in	15 1/4 in	16 3/4 in	19 in
	Strap width	2.5 cm / 1 in					
	<b>Skirt</b>						
	Waist (pattern)	77 cm	79 cm	81 cm	84 cm	87 cm	91 cm
		30 1/4 in	31 in	32 in	33 in	34 1/4 in	35 3/4 in
	Waist (finished)	64 cm	66 cm	68 cm	71 cm	74 cm	78 cm
25 1/4 in		26 in	26 3/4 in	28 in	29 1/4 in	30 3/4 in	
Length (side)	39.3 cm	43.3 cm	47.3 cm	54.5 cm	61.5 cm	68.5 cm	
	15 1/2 in	17 in	18 1/2 in	21 1/2 in	24 1/4 in	26 3/4 in	
<b>Fabric</b> (140 cm wide) (55 in wide)	<b>100 cm</b>	<b>105 cm</b>	<b>110 cm</b>	<b>130 cm</b>	<b>170 cm</b>	<b>200 cm</b>	
	<b>1 1/8 yd</b>	<b>1 1/4 yd</b>	<b>1 1/4 yd</b>	<b>1 1/2 yd</b>	<b>1 7/8 yd</b>	<b>2 1/8 yd</b>	

# Skirt Set Emely

Fabric/Size	86/98 18-24 mons.	98/104 3T/4T	110/116 5/6	122/128 7/8	134/140 9	146/152 10	
<b>For the petit child</b>	<b>Top</b>						
	Chest	58 cm	60 cm	62 cm	66 cm	70 cm	78 cm
		23 in	23 3/4 in	24 1/2 in	26 in	27 1/5 in	30 3/4 in
	Length (front)	27.5 cm	31 cm	34.5 cm	38.5 cm	42.5 cm	48 cm
		11 7/8 in	12 1/4 in	13 1/2 in	15 1/4 in	16 3/4 in	19 in
	Strap width	2.5 cm / 1 in					
	<b>Skirt</b>						
	Waist (pattern)	66 cm	68 cm	70 cm	73 cm	76 cm	80 cm
		26 in	26 3/4 in	27 1/5 in	28 3/5 in	29 4/5 in	31 2/5 in
	Waist (finished)	44 cm	46 cm	48 cm	51 cm	54 cm	58 cm
17 1/4 in		18 in	18 3/4 in	20 in	21 in	22 3/4 in	
Length (side)	39.5 cm	43.5 cm	47.5 cm	54.5 cm	61.5 cm	68.5 cm	
	15 1/2 in	17 in	18 1/2 in	21 1/2 in	24 1/4 in	26 3/4 in	
<b>Fabric</b> (140 cm wide) (55 in wide)	<b>90 cm</b>	<b>95 cm</b>	<b>105 cm</b>	<b>120 cm</b>	<b>150 cm</b>	<b>170 cm</b>	
	<b>35 1/4 in</b>	<b>37 1/4 in</b>	<b>41 1/5 in</b>	<b>47 in</b>	<b>58 4/5 in</b>	<b>66 3/4 in</b>	

## Cutting the Layout

Cut the pieces according to the list and layout below, observing grain lines. **Please note, the pattern pieces do not include a seam allowance.** You will need to ADD a seam allowance. Make sure to transfer all markings (the small marks on the edge of the pattern pieces.) You may like to cut the bodice lining out of a different fabric.

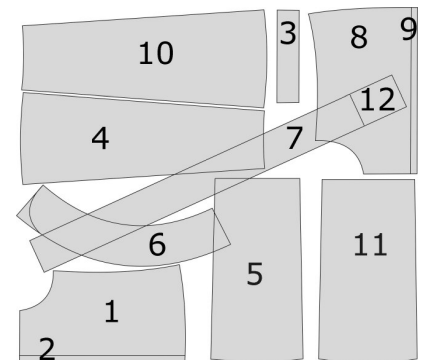
## Cutting List

### EMELY for petite children

- |                  |   |
|------------------|---|
| 1 - Bodice front | cut 2 on the fold (or 1 x main fabric, 1 x lining fabric) |
| 2 - Bodice back  | cut 4 (oder 2 x main fabric, 2 x lining)                  |
| 3 - Straps       | cut2  |
| 4 - Skirt        | cut6  |
| 5 - Skirt pocket | cut2  |
| 6 - Frill        | cut4  |
| 7 - Band         | cut1  |

### EMELY for solid children

- |                   |  |
|-------------------|--|
| 8 - Bodice front  | cut 2 on the fold (or 1 x main fabric, 1 x lining) |
| 9 - Bodice Back   | cut 4 (or 2 x main fabric, 2 x lining)             |
| 3 - Straps        | cut2   |
| 10 - Skirt        | cut6   |
| 11 - Skirt Pocket | cut2   |
| 6 - Frill         | cut4   |
| 12 - Band         | cut1   |



# Skirt Set Emely

## Sewing

### **Skirt**

1. Finish the top edge of the pocket, turn under and stitch to form a casing. Thread the elastic through the resulting casing and secure on the seam allowance. The elastic should gather the pocket until it is 3 to 4 cm (1 to 1 1/2 in) narrower than the skirt at the corresponding place.
2. Lay each of the pocket pieces onto a skirt piece. Line up the bottom edges and stitch the pockets onto the seam allowance of the skirt pieces from the bottom up to the pocket opening.
3. Stitch all six skirt pieces together making sure that the skirt pieces with the pockets are on the sides – two skirt pieces lie in between the two pocket pieces. Press the seam allowance to one side and top stitch.
4. Stitch the narrow edges of the frill pieces into a ring. Hem the frill. Alternatively, the frill piece can also end in a curved end (see pattern). In this case stitch the frill pieces into one long strip rather than a ring and hem the frill.
5. Gather the frill. This may be done using a wide zig zag stitch over a thick cotton thread. When doing this, do NOT stitch onto the thread, but rather stitch over it. Pull the cotton thread to gather the frill to the desired length. If you are using a light fabric and possess a good serger, adjusting your differential feed will often gather the frill sufficiently. Stitch the frill onto the skirt, press the seam allowance towards to skirt and top stitch.
6. Compare the length of the waistband with the waist size of the skirt. Fold the waist band strip in half, right sides together and stitch along the narrow side leaving a small opening for the elastic.
7. Place the right side of the waist band on the wrong side of the skirt, pin and stitch. Press the seam allowance toward the waistband.
8. Fold the waistband over so both right sides of the skirt and the waistband are showing. You will need to fold the seam allowance at the bottom of the waistband under, pin and topstitch. If you are using two thinner pieces of elastic you will need to sew an additional line in the middle of the waistband. Begin and finish the stitching for both lines approximately 1 cm (5/8 in) from the back seam, thus leaving room to thread the elastic. Thread elastic through the casing and close the gap by hand.

### **Sewing EMELY Top**

1. Fold the straps lengthways and fold the seam allowance inwards and topstitch so that you have two straps right side out.
2. Depending on the closure you choose, you may want to strengthen the fabric with fusible interfacing along the button band. Pin and sew the straps right sides together approximately 0.5 cm (1/4 in) from the armhole seam allowance onto the front and back bodice pieces. The straps must lay exactly opposite each other.
3. Close the side seams of the lining and bodice pieces.
4. Lay the bodice pieces and their linings right sides together (the straps will be in between the two pieces) and stitch. Be careful not to catch the straps in the arm holes. Leave an opening of approximately 13 cm (5 in) at the center back on one side, so you can turn the bodice right side out. Trim the seam allowance.
5. Turn the top right side out and topstitch.
6. Choose your closure for the back – buttons, snaps, zipper, etc. – and complete the top with your desired closure.