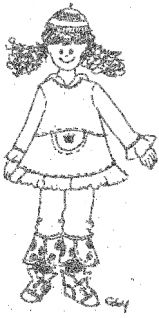


# Sweatshirt JULE



This sweatshirt should be sewn using flexible fabrics such as jersey fabric or knitted fabrics.

This design is a perfect A-Line design for all hooded sweatshirts, when excluding the pocket, and is great for beginning sewers.

The finished sweatshirt fits to each particular size well, is narrow at the top and not too long. If you would like to make the item as a Pullover, use the next bigger size.

Examples of CARA may be viewed at: <http://www.farbenmix.de/anleitungen/>

## Material

It is important that you recheck the waist and length to verify that you have the desired measurements!

Fabric / Sizes	86/92 1 / 2	98/104 3 / 4	110/116 5 / 6	122/128 7 / 8	134/140 9 / 10
Length	41.7 cm 16.4"	45.5 cm 17.9"	49.3 cm 19.4"	53.1 cm 20.9"	56.9 cm 22.4"
Width under Arm	65 cm 25.6"	67 cm 26.4"	69 cm 27.2"	73 cm 28.7"	77 cm 30.3"
Length of Arm from Neck	35.9 cm 14.1"	40.9 cm 16.1"	45.9 cm 18.1"	51.1 cm 20.1"	56.3 cm 22.2"
<b>Material – Fabric</b> (140 cm – 55" wide)	<b>75 cm</b> <b>29.5"</b>	<b>90 cm</b> <b>35.4"</b>	<b>110 cm</b> <b>43.3"</b>	<b>130 cm</b> <b>51.2"</b>	<b>185 cm</b> <b>72.8"</b>
Notions	Fusible web or seam binding tape				

## Cutting

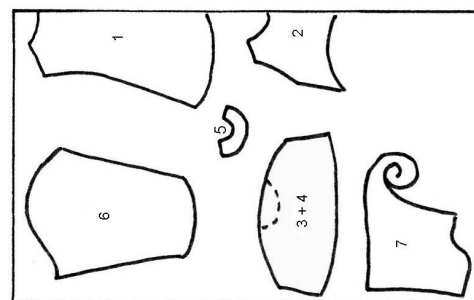
**Note: You must add a seam allowance of 3/8" to each piece, unless indicated.**

- |                                  |             |
|----------------------------------|-------------|
| 1 - Back                         | 1 x on Fold |
| 2 - Front, top                   | 1 x on Fold |
| 3 - Front, inner bottom          | 1 x on Fold |
| 4 - Front, outer bottom          | 1 x on Fold |
| 5 - Pocket opening, bottom front | 1 x on Fold |
| 6 - Arm                          | 2 x         |
| 7 - Hood (seam allowance added)  | 2 x         |

Ruffle for Hem – Square:

86/92 1 / 2	98/104 3 / 4	110/116 5 / 6	122/128 7 / 8	134/140 9 / 10
2 x (8 x 74cm/29.1")	2 x (8 x 80cm/31.5")	2 x (8 x 86cm/33.9")	2 x (8 x 94cm/37")	2 x (8 x 102cm/40.2")

Arm Hem – Square: 2 x (8 x 40 cm/ 50.8")



# Sweatshirt JULE

## Sewing:

1. Apply the fusible web or seam binding tape to the cross seam of the front, top piece. Also apply the fusible web to the back of the pocket opening, bottom front.
2. Hem all ruffle strips and stitch edges.
3. Lay pocket opening, bottom front and front, outer bottom right sides together and sew top edges together. Cut excess fabric from the seam and turn right sides out, with fused side inward. Stitch loose edge of pocket opening with an edge stitch or clean stitch, then stitch again to the front, outer bottom 2 cm (1") from the edge stitch.
4. Sew both front, bottom pieces together to form one working piece.
5. Position front top and front bottom pieces together at the midriff, right sides together and begin stitching both pieces together. Iron seam allowance upward and finish with an edge stitch.
6. Place wrong sides of hood pieces together so that the right sides are faced out and visible. Serge (or zigzag stitch) the crown of the hood together from the front of crown all the way to the end of the "tail". Use the same stitch for the back of the hood also. Fold the front edges of the hood inward twice and sew with a loose, flexible stitch.
7. Turn sweater wrong side out and stitch shoulder seams together.
8. Baste stitch hood to the sweater so that the back of the hood at the seam is centered onto the back neckline of the sweater. Overlap the front corners of the hood at the bottom so that this is centered onto the front neckline of the sweater and baste stitch to hold in place. Make sure right sides of hood and sweater are together and begin stitching these together with a loose, flexible stitch. Lay seam flat at the neckline and finish with an edge stitch and with a loose, flexible stitch.
9. Gather ruffle fabric with a baste stitch or ruffler foot. Attach to smaller opening of arm pieces and to hem of sweater, making sure to distribute the ruffle evenly. Fold seam allowance at the ruffle on arms inward and finish with an edge stitch.
10. Position arms and sweater right sides together at shoulder of sweater and begin stitching these together from one corner to the other.
11. Finish up by stitching up the sides of sweater and underside of arms with one long, finishing stitch.

Design:	Sabine Pollehn
Pattern:	Anja Müssig
Translation:	Eliza Yilmaz
Cover Art:	Gaby Siewertsen