

Apron Pants RONJA

The RONJA with an apron skirt is a wonderful basic piece for warmer days.



The pants can look cute and girly or cool and sporty, depending on the fabrics you choose. Ronja also works well as capri pants without the skirt. RONJA is very versatile: Try RONJA with or without ruffles, with bias tape, with a different color skirt, with an apron pocket or with different kinds of embellishments. The pants are easy and quick to sew and suitable for beginners. The ruffles, however, require a little extra effort.

Step-by-step photo illustrations for sewing RONJA can be viewed at <http://www.farbenmix.de/anleitungen/schnitte/ronja/ronjafoto/Fotoronja.htm>

You may also view many design examples at <http://www.farbenmix.de/anleitungen/schnitte/ronja/RonjaDesign.htm>

Important: Please take measurements, including the side seam and waist before sewing.

Material

Fabric / sizes	86/92 1/2	98/104 3/4	110/116 5/6	122/128 7/8	134/140 9/10
Waist (pattern)	56 cm 22 1/8"	57 cm 22 1/16"	59 cm 23 2/8"	63 cm 23 6/8"	67 cm 26 3/8"
Waist (actual)	42 cm 16 1/2"	44 cm 17 3/8"	46 cm 18 1/8"	49 cm 19 5/16"	52 cm 20 1/2"
Hips	61,5 cm 24 1/4"	64 cm 25 3/16"	67 cm 26 3/8"	73 cm 28 6/8"	79 cm 31 1/8"
Side seam (incl. ruffles)	33,5 cm 13 3/8"	37,5 cm 14 6/8"	43,5 cm 17 1/8"	52 cm 20 1/2"	60 cm 23 5/8"
Skirt length	20 cm 7 7/8"	22 cm 8 5/8"	24 cm 9 7/16"	27 cm 10 5/8"	30 cm 11 6/8"
Fabric (55" wide)	110 cm 43 3/8"	115 cm 45 2/8"	120 cm 47 2/8"	125 cm 49 3/16"	130 cm 51 3/16"
Notions	39 3/8" of 3/8"elastic, 4 buttons, thread				

Cutting the Layout

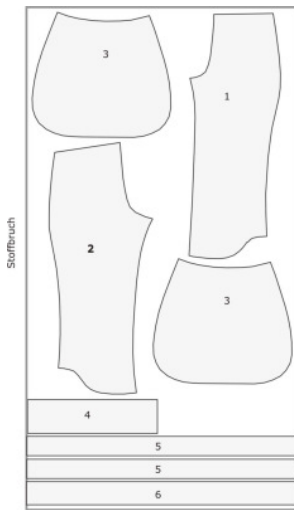
Arrange the pattern pieces on the fabric according to the layout below. Please remember to add seam allowances: **Please note, the pattern pieces do not include a seam allowances.** The only piece including a seam allowance is the waistband #4. The waistband may be cut on a single layer of fabric or folded in half and cut on the fold.

Pant pieces:

1 - Pant leg front	2 x
2 - Pant leg back	2 x
3 - Skirt	4 x
4 - Waistband (incl. seam allowance)	1 x on fold
5 - Ruffles for the skirt (2" x 27 1/2")	4 x
6 - Ruffles for the pant cuffs (2 3/8" x 27 1/2")	2 x

Apron Pants RONJA

Pattern Layout:



Sewing:

1. Stitch pant leg front and back right sides together. Press seam toward the front leg and topstitch.
2. Fold the ruffles (pieces 5 & 6) lengthwise wrong sides together and finish the top edge. Gather or pleat the ruffles as desired.
3. Stitch the pant ruffles right sides together to the pant cuff. Press the ruffle seam towards the pants and topstitch.
4. Close both inseams of the pant legs.
5. Turn one pant leg right side out and insert it inside the other pant leg, right side out. Now you'll close the crotch seam. Start at one end and sew in one continuous motion the crotch seam. Turn pants right side out and topstitch the seam.

If you choose to make the pants without the skirt, skip to Step #8 now.

6. Stitch the skirt ruffles (5) right sides together to the skirt pieces. Press seam allowance inside, and topstitch along the seam.
7. Gather the top edges of the skirt pieces. Pin the skirt pieces to the pant waist and stitch along the seam allowance.
8. Next is the waistband (4). Stitch the ends right sides together leaving a little opening in the bottom 3rd for inserting the elastic. Now attach the waistband. The easiest way to attach is to stitch the right side of the waistband to the inside of the pants. Now you'll fold the waistband over. Fold the seam allowance under and pin it to the outside of pants. First you'll topstitch the bottom and then the top. Lastly, you'll topstitch right along the middle so you'll get 2 casings. Don't forget to leave an opening for inserting the elastic.
9. Insert the elastic into the waistband casings and close the little openings.
10. If the apron pieces are to be worn as a skirt, attach buttons, ribbon ties, etc. where the pieces overlap.

We wish you fun and success with your sewing project!!

Design:	Sabine Pollehn
Pattern:	Anja Müssig
Instructions:	Katalina Grohman
Cover art:	Gaby Siewertsen