

DoppelDecker

The DoppelDecker (double-decker) is a small project for one afternoon or evening.

Make a snuggly binky from two fleece blankets!

Sometimes you can get fleece blankets as a real bargain and they are easy to sew, so go for it, even if you are a newbie at sewing and big kids can do it as well.

Sew matching ones to your couch or one for each child.

Presents don't need to be expensive or complex!

Have Fun!!!



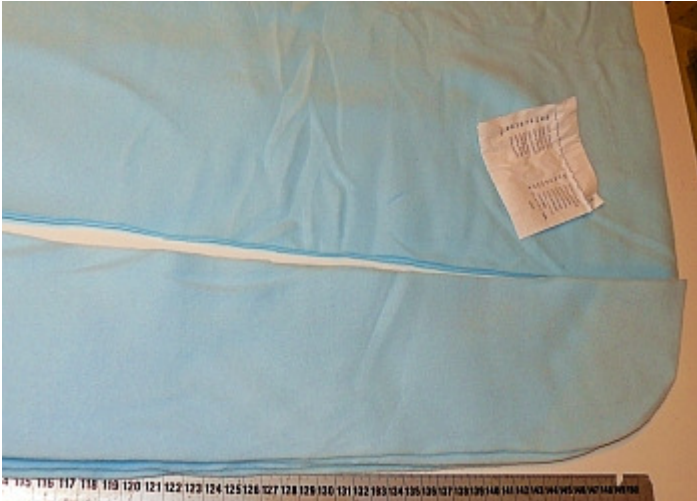
**Sew and sell as much DoppelDecker as you want.
You might as well provide this pdf-tutorial on your website for
downloading on one condition: create a link to farbenmix.de.**

Material:

2 Fleece blankets

or

2 thin to medium fleece fabrics approx. 140 * 170 cm



Cutting of the tags and measure the blankets.

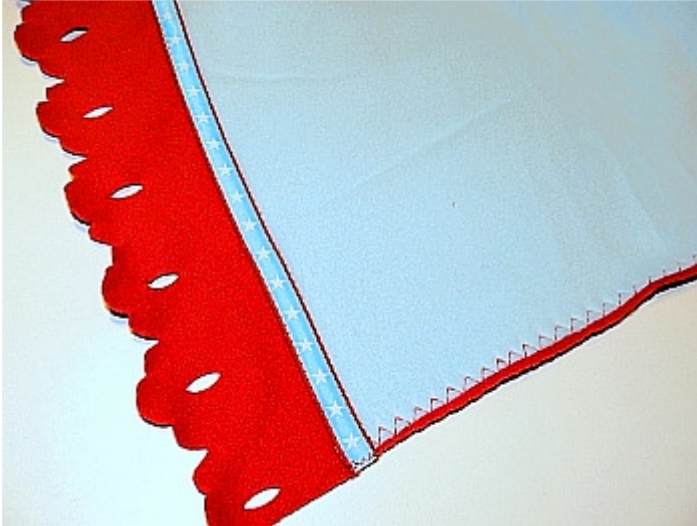
Both blankets should have the same wide, cut the wider blanket if needed.

The lower layer should be 15 cm longer than the upper one. Shorten one if necessary.



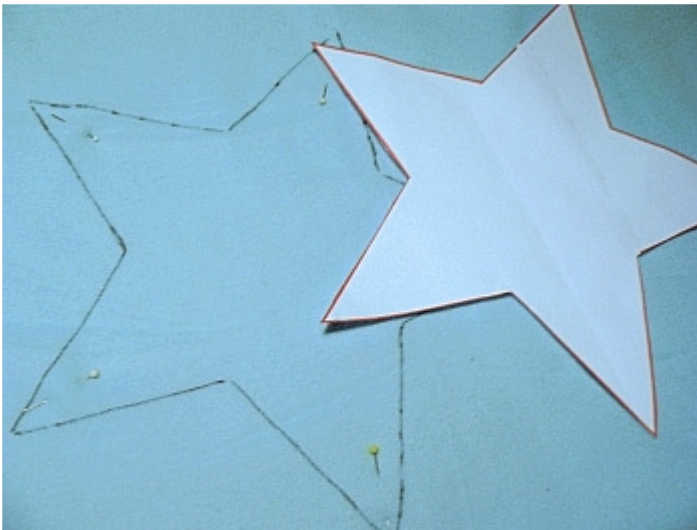
In these case the red blanket is the under layer and the blue one is the upper layer. The red blanket is already trimmed, but after finishing you could also cut fringes.

Pin the upper blanket centred on the lower one.



Firstly sew the long sides together, for best results use a wide zig-zag but not too tight.

Then sew the shorter sides close to the edge together. Hide the seam under a nice ribbon; fold the ends of the ribbon a little bit under.



Print and cut your favourite pattern twice and glue both pieces together.

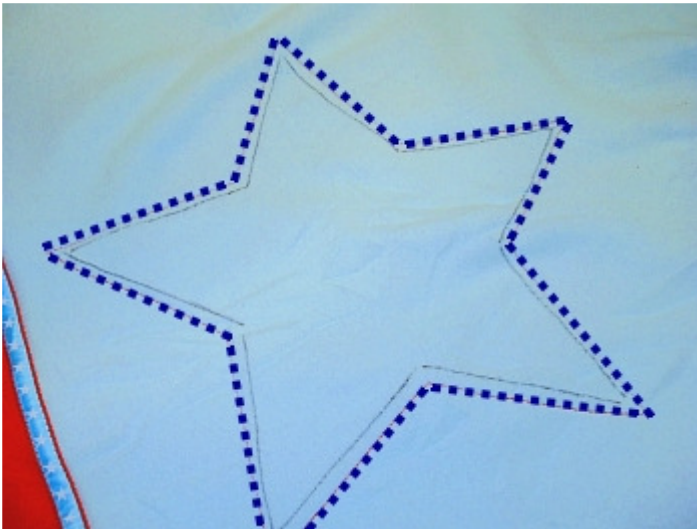
Here the star is used; but you could use all kinds of shapes and in different sizes as a template.

Lay the star on the upper layer and outline it. You can use a fine liner.

Make sure, both blankets are flat and waveless. Secure both layers with pins inside the pattern.



Draw stars or what ever you like.



Topstitch presser foot wide (0,5 cm) outside of the outlines. Most suitable it the "triple stretch straight stitch."



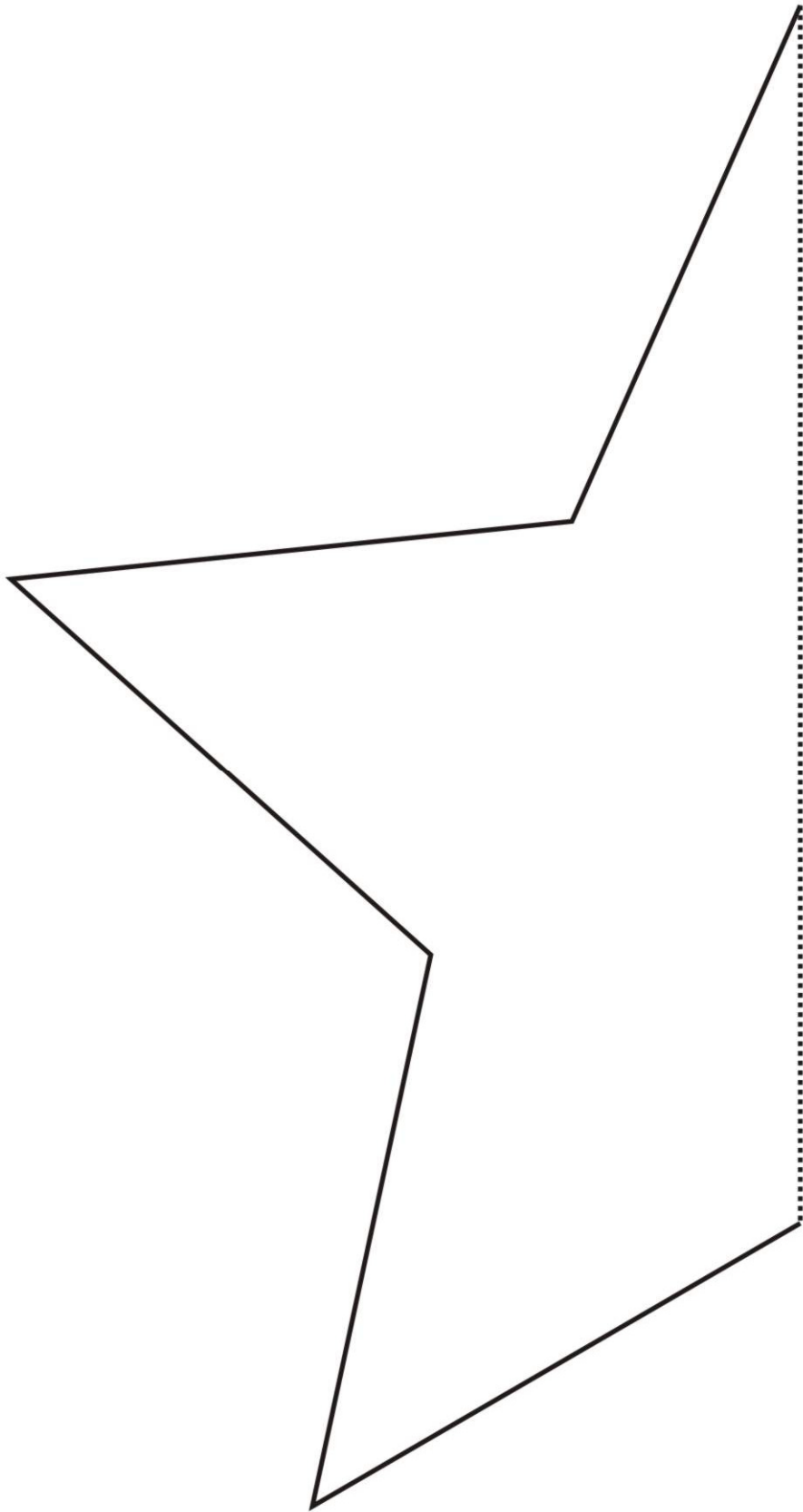
Finally cut all shapes inside the topstitching. Make sure you cut only the upper layer! Leave a verge of approx. 3 mm to the stitching line.



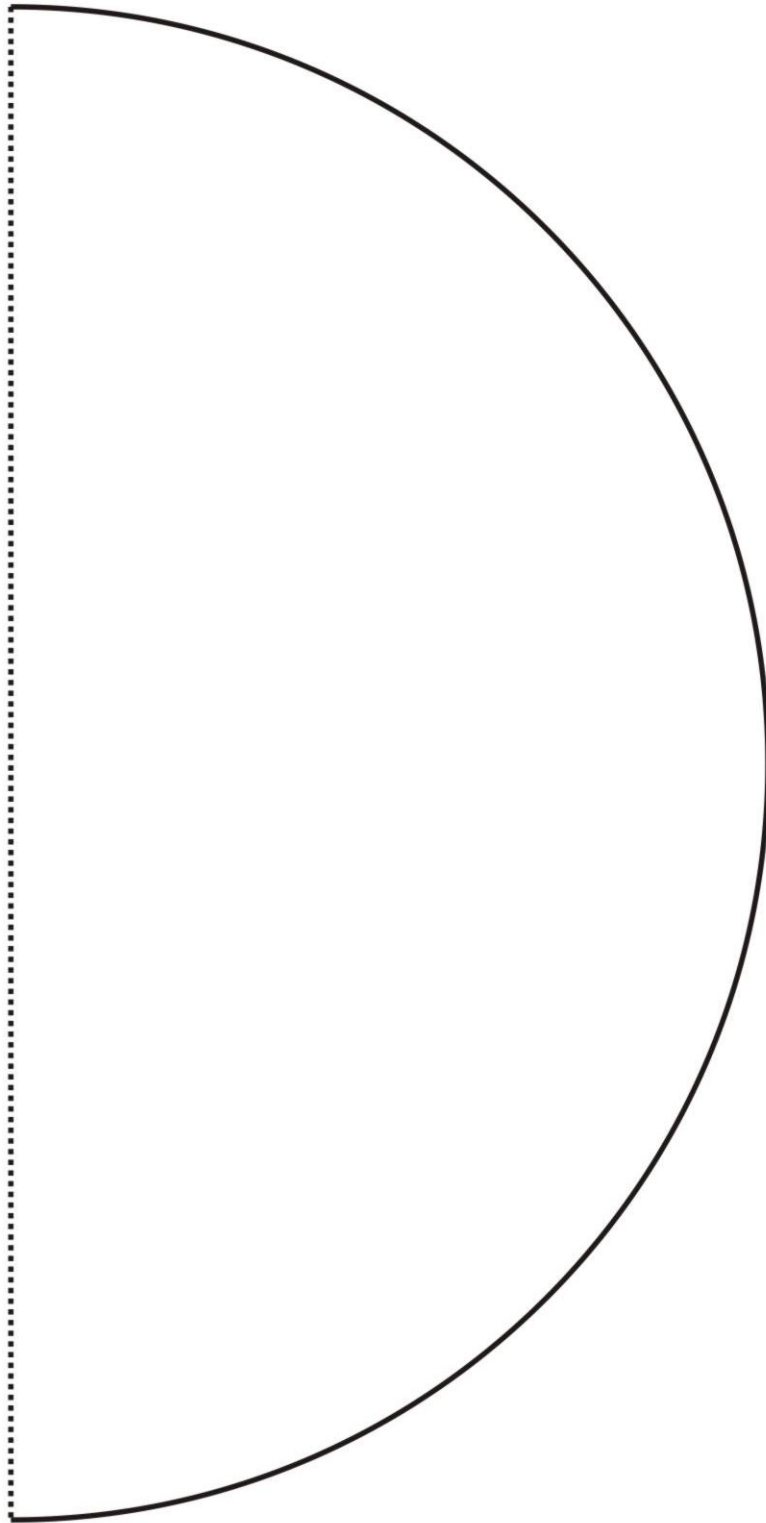
All done!



Star



Circle



Heart

